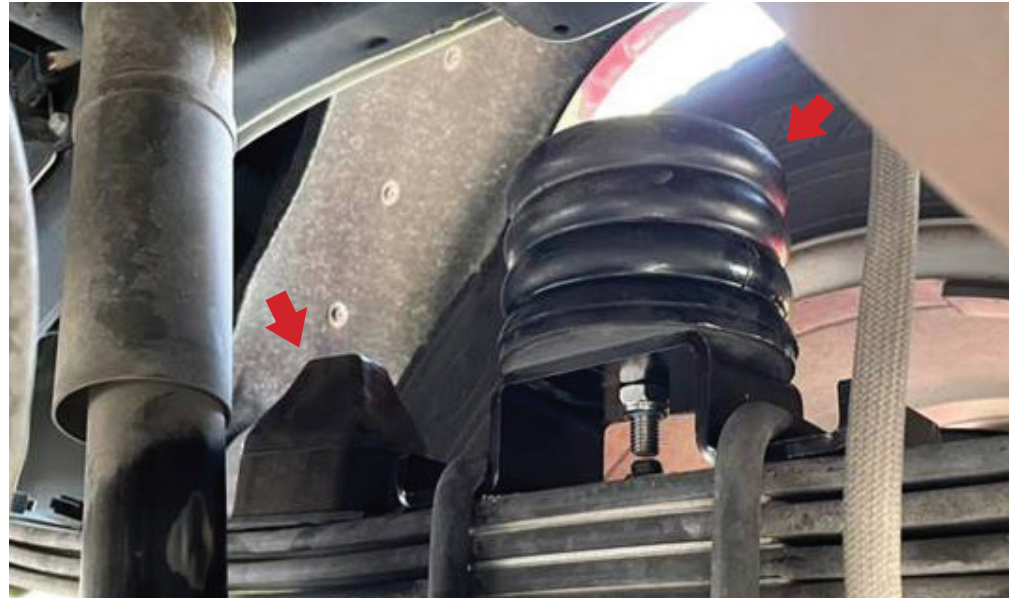


Installed Items : UB1 (Top) +UB2 + Z1-UBS (Bracket)

**IMPORTANT NOTICE:** RUBBERSHOX INSTALLERS SHOULD APPLY COMMON AUTOMOTIVE SAFETY PRACTICES WHEN RAISING, LOWERING AND WORKING ON VEHICLES, ALWAYS WEARING SAFETY GLASSES, USING BOTH HYDRAULIC JACK AND JACK STAND DURING THE INSTALLATION. We recommend that this installation be done by a professional or person with auto mechanical knowledge. RubberShox Universal Bump Stops are designed to work with original factory springs only. These instructions are general guide line. RubberShox assumes no liability for actual installation process. Rubbershox does not recommend exceed the maximum load recommended by vehicles manufacturer (GVWR)



UB1 (Top) +UB2



(Left) OE Bump Stop, (Right) RubberShox Model : UB1 (Top) +UB2 + Z1-UBS (Bracket)



UB1 (Top) +UB2 + Z1-UBS (Bracket) vs. GMC Canyon OE Bump Stop

UB1 (Top) + Z1-UBS (Bracket) Installed for daily driving. Patent pending: modular design bump stop. Add oneUB2 or two UB2(UB3 model equivalent) when towing heavy boat/trailer, prevent rear end drooping and provide more support on load by adding multiple UBS module.